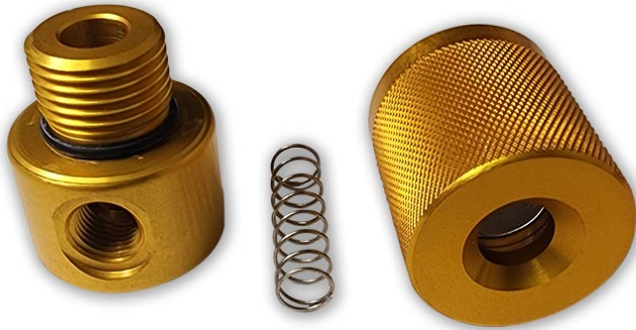


"EYEBALL" VISUAL CARTRIDGE CHANGE INDICATOR - (CO/H₂O ELEMENT)



PRECAUTIONS

Always depressurize system and disconnect electrical source prior to performing any service action. Do not direct compressed gases at bodily openings, eyes, or skin. Replace entire visual indicator assembly if any portion of it, other than seals, exhibit wear or deterioration.

SCOPE

The "eyeball" indicator is a direct reading, colormetric device whose purpose is to warn the operator of approaching need for cartridge change. The core of this unit is the "element." This element contains a reagent which responds to a specific contaminant within a determined range. There is a variety of elements available to fit many applications.

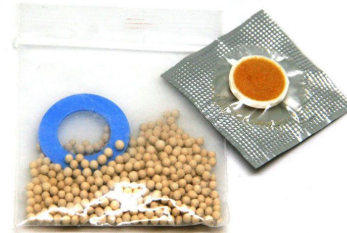
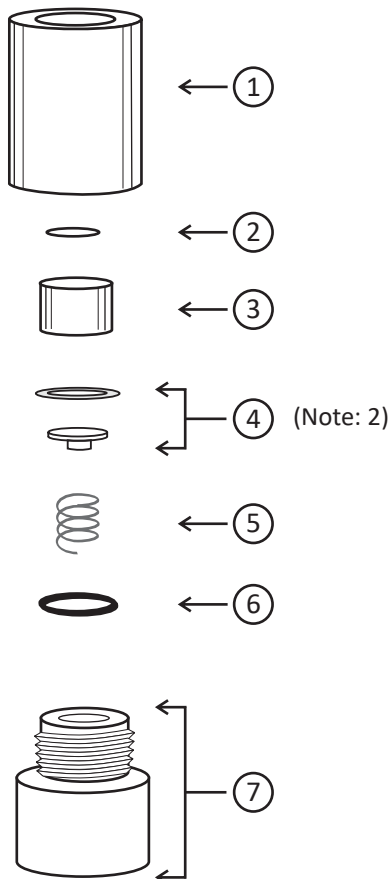
Since the "eyeball" visual indicator element "sees" the gas at actual operating pressure and conditions, it is fairly accurate and is very helpful in determining cartridge life span. However, it does not take the place of scientific instruments nor give quantitative measurements.

ITEM	QTY	DESCRIPTION
1	1	upper body
2	1	lens seal
3	1	lens
4	1	element kit
5	1	spring
6	1	main seal
7	1	lower body (with stem)

INSTALLATION OF ELEMENT

To change or install a new element, you must release all pressure from the assembly and unscrew the upper portion of the body (counterclockwise). Simply lift out the used element and drop a fresh one into place. **DO NOT** open the element package until you are ready to install it. Ensure that the "lens" of the element is facing against the "lens" of the body.

These elements provided with this unit are activated by moisture and carbon monoxide.



The visual indicator element kit consist of two parts:

1. INNER BUTTON
2. OUTER CIRCLE

Note: See color strips graphic on next page.

SERVICE

Change out the main seal each time the element is replaced. Lubricate the main body threads and seal with non-hydrocarbon grease.

OPERATION

As gas flows through the "eyeball" visual indicator the element picks up contaminating substances and when the levels reach the point where the element is sensitive it will exhibit a color change. (See enclosed color strip graphic, next page.)

Should any color change occur, take the appropriate action immediately or contact Nuair technical help line at +1.805.815.4044.



INDICATOR COLOR STRIPS

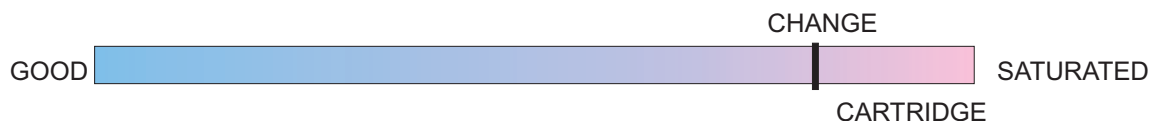
INNER BUTTON:

Is chemically treated to change from a golden/yellow color to a gray/black if the carbon Monoxide (CO) level exceeds 50 ppm. This color change will take place after 1-4 minutes of operation with contaminated air.



OUTER CIRCLE:

Is chemically treated to change from blue to pink in the presence moisture in excess of 10% RH.



Note: Elements must be replaced after 3 months or whenever any color change has occurred.

GOOD CONDITIONS:

INNER BUTTON - YELLOW

OUTER BUTTON - BLUE

Note: This indicator should not replace regular air analysis by an accredited laboratory.
