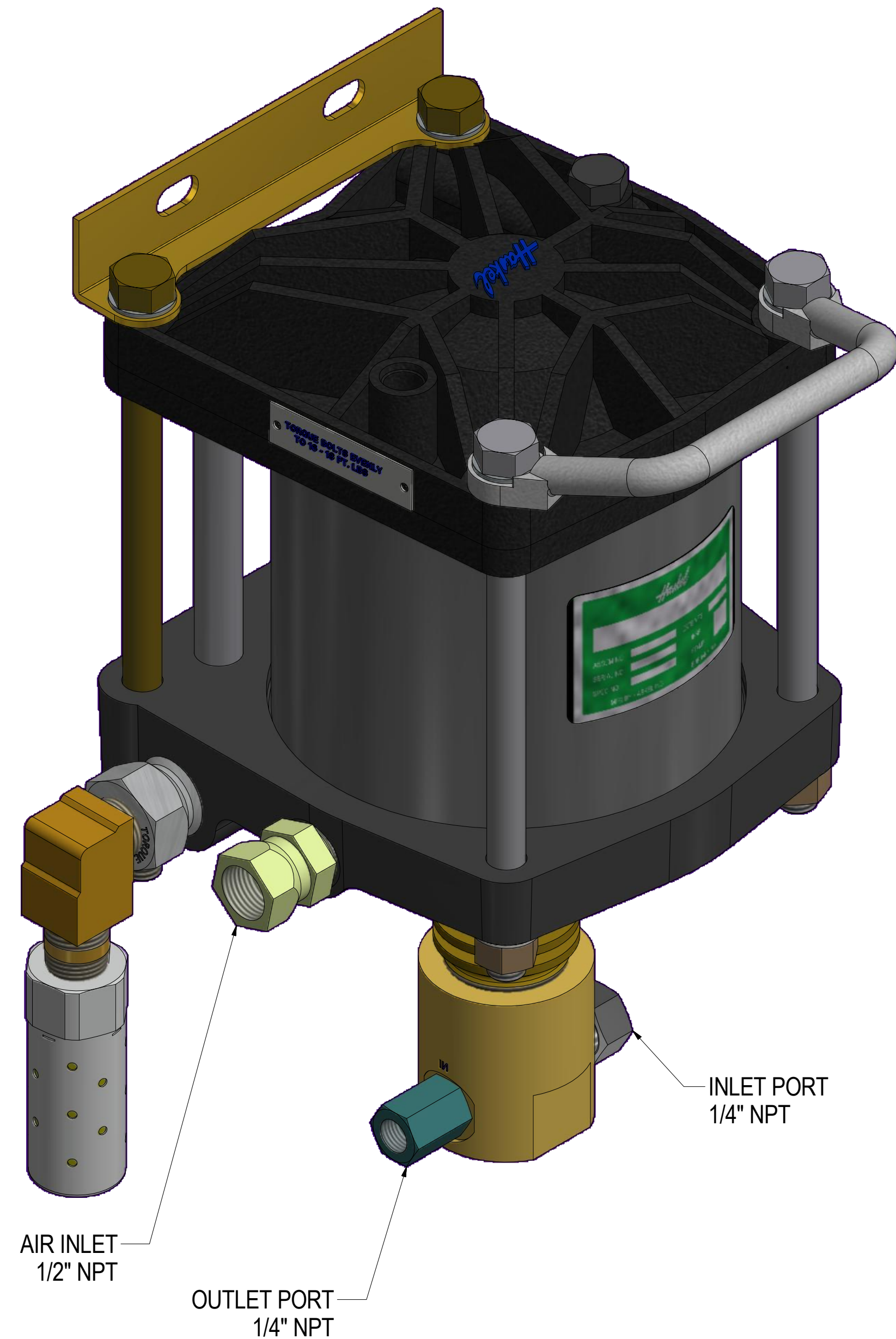


REVISION			
REV	DESCRIPTION	DATE	CHECKED
P	REVISED PER ECO 32715	4/13/2018	PM

NOTES:

- LUBRICATE PISTON AND CONTROL VALVE PER HPS-3.14. LUBRICATE 568050-2 AIR BARREL 'O' RING GASKET.
- AIR DRIVE PISTON IS PERMANENTLY ASSEMBLED TO PISTON ROD AND CANNOT BE PROCURED SEPARATELY.
- PARTS INCLUDED IN AIR DRIVE SEAL KIT 16772.
- PARTS INCLUDED IN AIR CONTROL VALVE SEAL KIT 16771.
- PARTS INCLUDED IN GAS SECTION SEAL KIT 17749.
- THE BELLEVILLE SPRING ARE ASSEMBLED IN SETS OF TWO, CUPPED ALTERNATIVELY IN OPPOSITE DIRECTIONS.
- APPLY BLUE LOCTITE NO. 243 TO PARTS.
- TORQUE TO 16-18 FT-LBS.



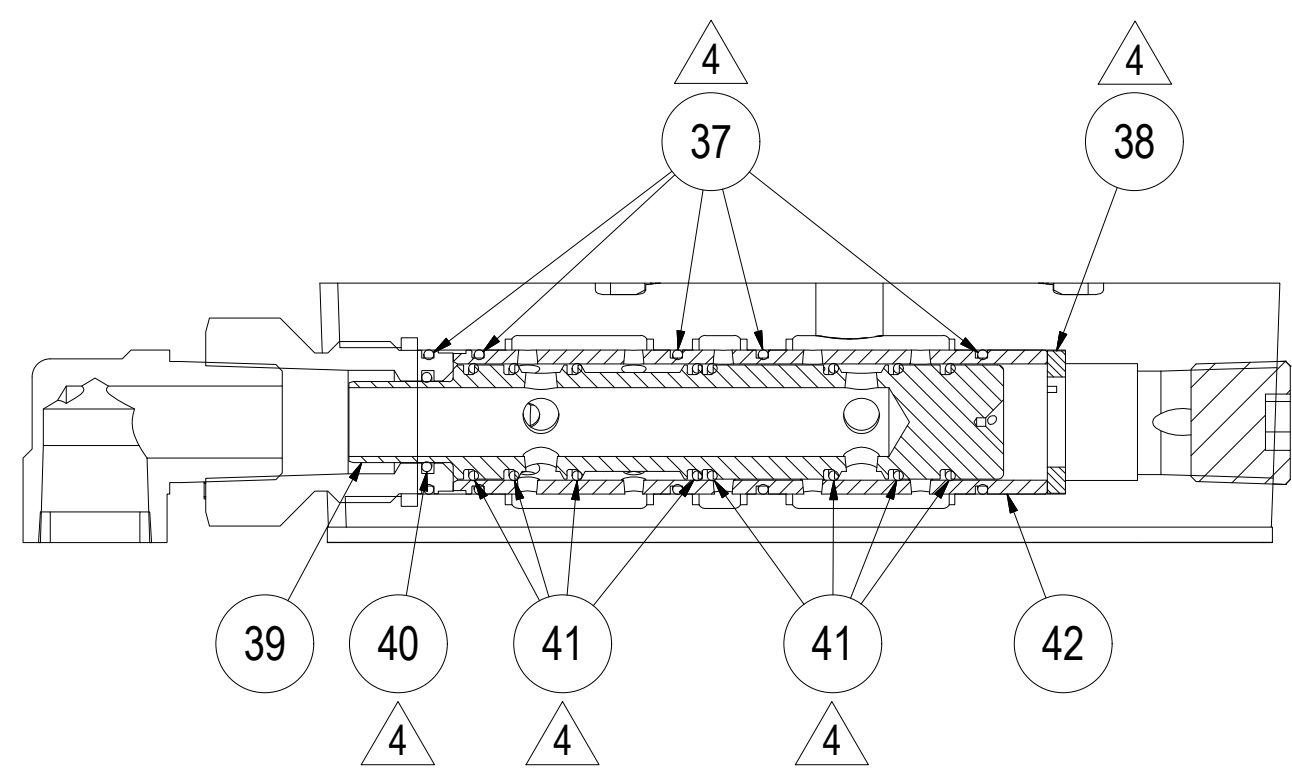
PARTS LIST					PARTS LIST				
ITEM	PART NUMBER	DESCRIPTION	MATERIAL	QTY	ITEM	PART NUMBER	DESCRIPTION	MATERIAL	QTY
1	17568-2	PLUG, 1/8 NPT	STEEL	2	37	568020-2	O-RING	BUNA-N	5
2	17830	LABEL-LUBRICATION	POLYESTER	1	38	17524	SPACER (NEOPRENE)	300 SERIES SS/NEOPRENE	1
3	27077-3	TUBE, PILOT	300 SERIES SS	1	39	17567	SPOOL 1/2" AIR VALVE	2024-T4 AL	1
4	568010-2	O-RING	BUNA-N	2	40	568015-38	O-RING	CARBOXYLATED NITRITE	1
5	17568-5	PIPE PLUG	STEEL	1	41	568017-38	O-RING	CARBOXYLATED NITRITE	8
6	17568-3	PLUG	STEEL	1	42	16648	SLEEVE	AL 7075-T6	1
7	27078-3	FLOW TUBE	304 SS / ASTM A 240	1	43	17222	FITTING ASSEM. - INLET CHK	303 SS	1
8	568014-2	O-RING	BUNA-N	2	44	568905-9	O-RING	BUNA-N	1
9	17666	MOUNTING BRACKET	12 GA STEEL	2	45	568010-9	O-RING	BUNA-N	1
10	17562-9	HEX BOLT 1/2-13UNC X 9"	300 SERIES SS	2	46	26130-10	BALL	316 S.S.	1
11	CNF00028	WASHER, STEEL, FLAT, 1/2"	STEEL CARBON	8	47	17811	SPRING GUIDE	2024-T4 AL	1
12	28607	NAMEPLATE, TORQUE	ALUMINUM	1	48	16723	SPRING	18-8 SS	1
13	17562-7	HEX BOLT 1/2-13UNC X 8"	300 SERIES SS	2	49	28081-1	SEAT	PTFE, VIRGIN	1
14	16679	HANDLE	DIE CAST ALLOY	1	50	28083-1	RING	316 SS	1
15	28752	AIR CAP	AL DIE CAST ALLOY	1	51	28083-2	RETAINER CHECK VALVE	316 SS	1
16	17342	LABEL, STANDARD	ALUMINUM 1145-H-19	1	52	26130-8	BALL	316 SS	1
17	17339-2	BARREL	AMALGA BA-0575-NS-C	1	53	28082	SPRING	316 SS	1
18	16501-2	LOWER CAP, AIR	356 T-6 ALUM	1	54	26685	SPRING	316 SS	1
19	17995	HEX NUT 1/2-13UNC	COMMERCIAL STEEL	4	55	28104-3	BODY, OUTLET	316 SS	1
20	CNF00029	LOCK WASHER 1/2 SS	SS	4	56	16705-30	BACKUP BRONZE	BRONZE, SOFT TIN	1
21	17522	BODY, PUMP	15-5 OR 17-4 C'RES	1	57	16704-30	SEAL	PTFE	1
22	52396	END CAP	2024 T4 ALUMINUM ALLOY	1	58	17225-30	BACKUP, GAS PACKING	BRONZE, SOFT TIN	1
23	17395	AIR PISTON ASSEMBLY	ALUMINUM/15-5 PH	1	59	27065	SEAL	PTFE	1
24	5008-125h	RETAINER		1	60	568117-31	O-RING	VITON	1
25	17384	BEARING	BEARIUM B-10	1	61	51365	BEARING	RYTON 1834	1
26	20WLN-S	NUT	AISI 4140	1	62	16719-5	SPRING WASHER	17-4PH SS	12
27	61019-8S	FITTING, SWIVEL	STEEL	1	63	51364	NUT	303 SS	1
28	62012-8B	STREET ELBOW	BRASS	1	64	MS24665-90	COTTER PIN	C.R. STEEL	1
29	16649	RETAINER	AL 2024-T351 OR T4	1	65	16510	PLUG	AL 2024-T351 OR T4	2
30	79008	PIPE CLOSE NIPPLE	BRASS	1	66	568906-9	O-RING	BUNA-N	3
31	21701	MUFFLER-1/2 NPT	ALUMINUM 6061	1	67	16513	SPRING	ASTM-A-228	2
32	568050-2	O-RING	BUNA-N	2	68	27375-3V	STEM, PILOT VALVE	303 SS	1
33	27272	O-RING	BUNA-N	1	69	568006-2	O-RING	BUNA-N	2
34	568029-2	O-RING	BUNA-N	1	70	16517	SPACER	BRASS	2
35	MS28774-123	BACKUP	PTFE	2	71	5005-31H	RETAINER RING	15-7 PH	2
36	568123-2	O-RING	BUNA-N	1	72	27375-4V	STEM	STAINLESS STEEL, 304	1

INFORMATION CONTAINED HEREIN IS SUBJECT TO THE EXPORT ADMINISTRATION REGULATIONS (EAR) OF THE UNITED STATES OF AMERICA AND EXPORT CLASSIFIED UNDER THOSE REGULATIONS AS (ECCN: EAR99). NO PORTION OF THIS DOCUMENT CAN BE RE-EXPORTED FROM THE RECIPIENT COUNTRY OR RE-TRANSFERRED OR DISCLOSED TO ANY OTHER ENTITY OR PERSON NOT AUTHORIZED TO RECEIVE IT WITHOUT THE PRIOR AUTHORIZATION OF HASKEL INTERNATIONAL, LLC. THIS NOTICE SHALL BE ATTACHED TO ANY REPRODUCED SECTION OF THIS DOCUMENT.

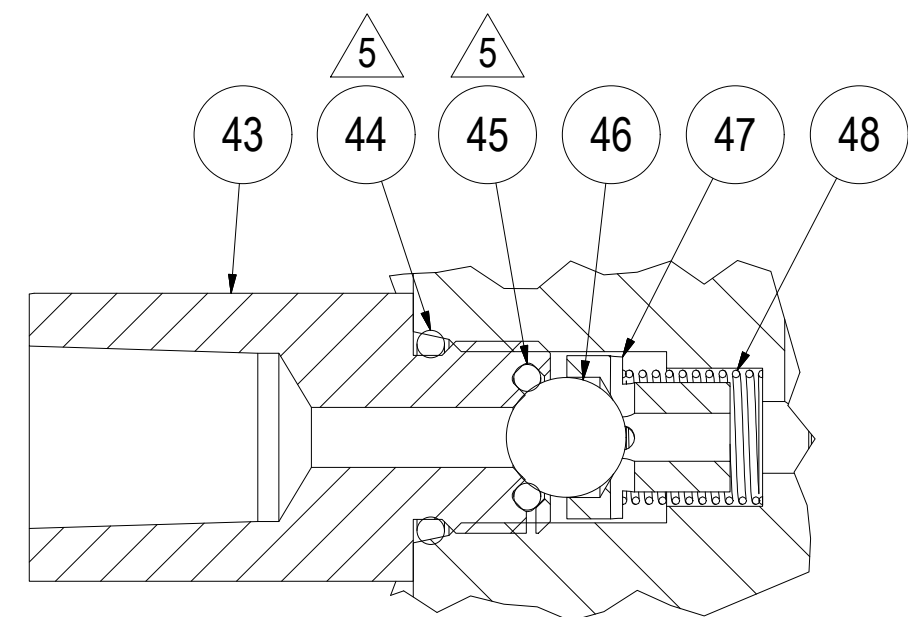
THIS DRAWING EMBODIES A CONFIDENTIAL PROPRIETARY DESIGN. ALL RIGHTS FOR REPRODUCTION, MANUFACTURING OR PATENTS ARE RESERVED BY HASKEL INTERNATIONAL, LLC.

NEXT ASSY (REF ONLY)		Haskel International, LLC Burbank, California 91502	
APPROVALS	DATE	TITLE	
DRAWN ROSULEK	12/6/1971	ASSEMBLY, AA-30 AIR AMPLIFIER	
CHECKED ERA	12/11/1972	SIZE	CAGE CODE
APPROVED CWS		D	81400
CAD FILENAME	AA-30	DWG NO.	17713
	SCALE: 3/4	INVENTOR DRAWING	SHEET 1 OF 2

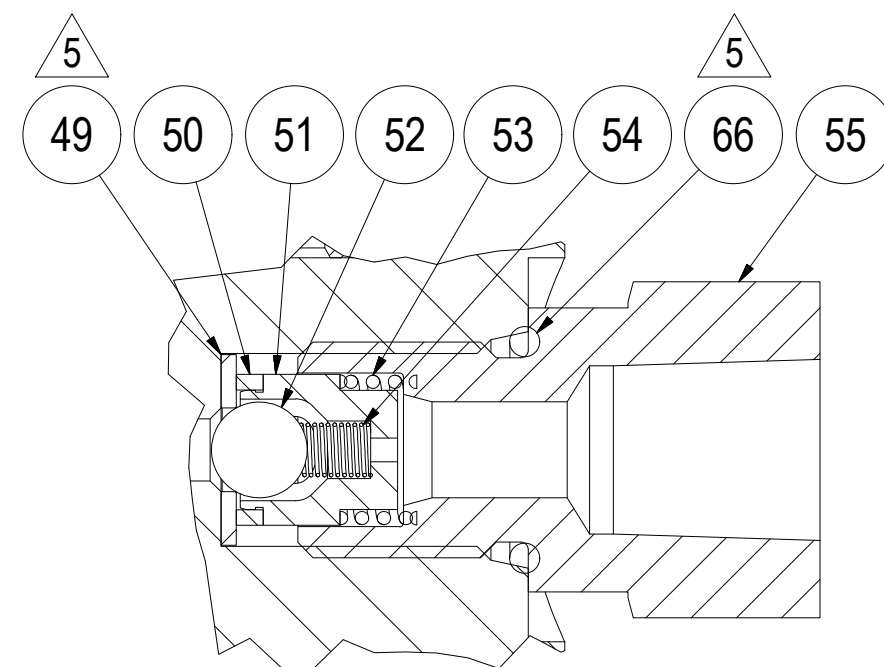
REVISION			
REV	DESCRIPTION	DATE	CHECKED
	SEE SHEET 1		



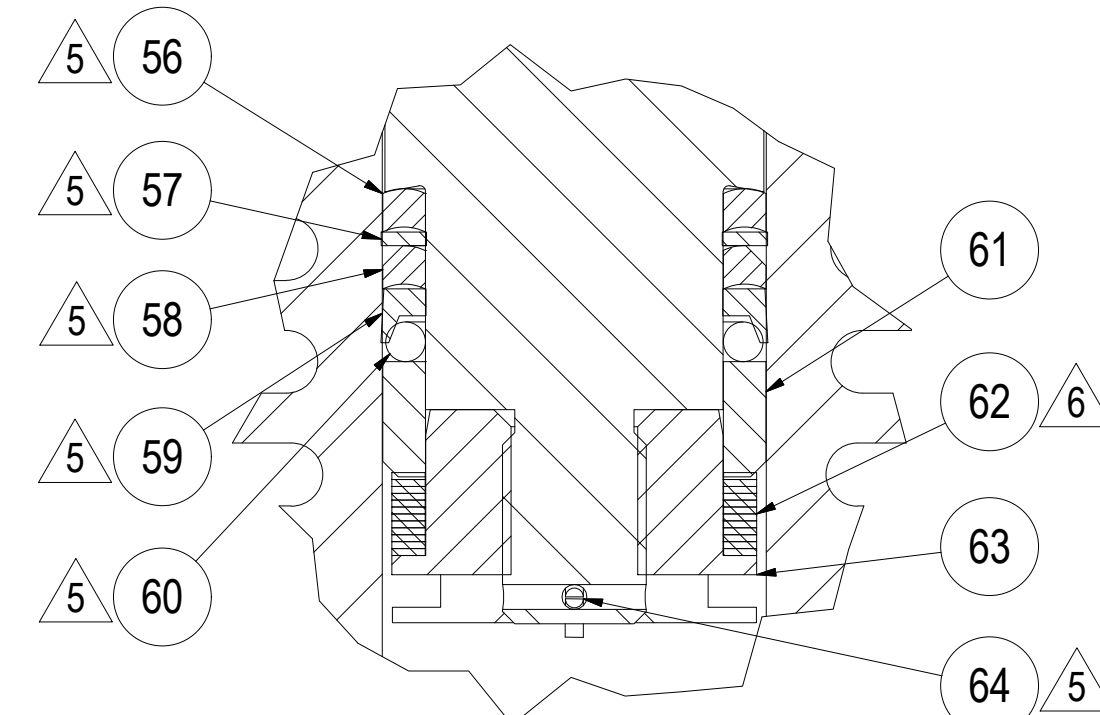
SECTION D-D  
AIR CONTROL VALVE



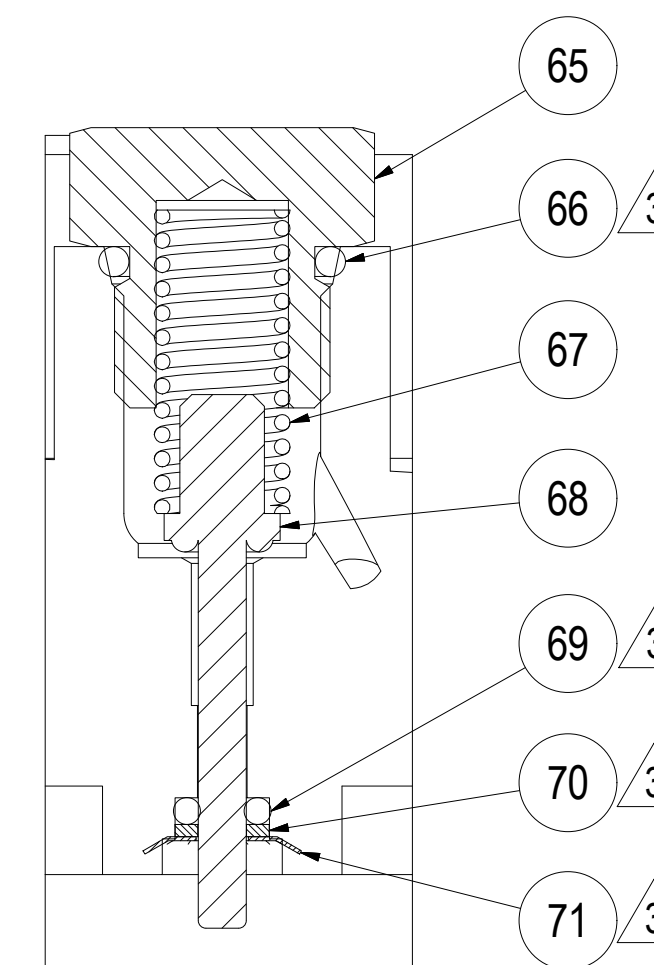
DETAIL E  
INLET



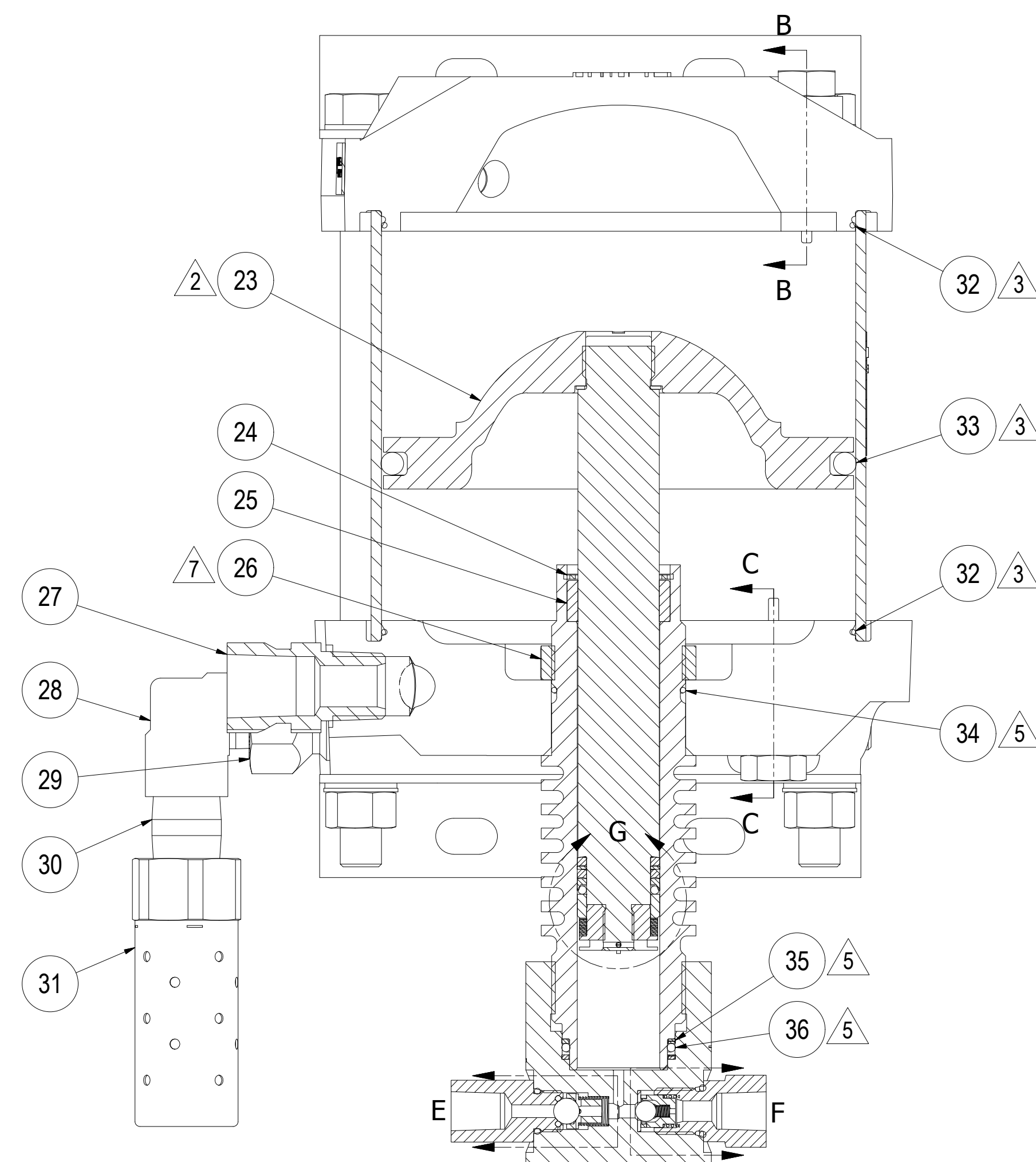
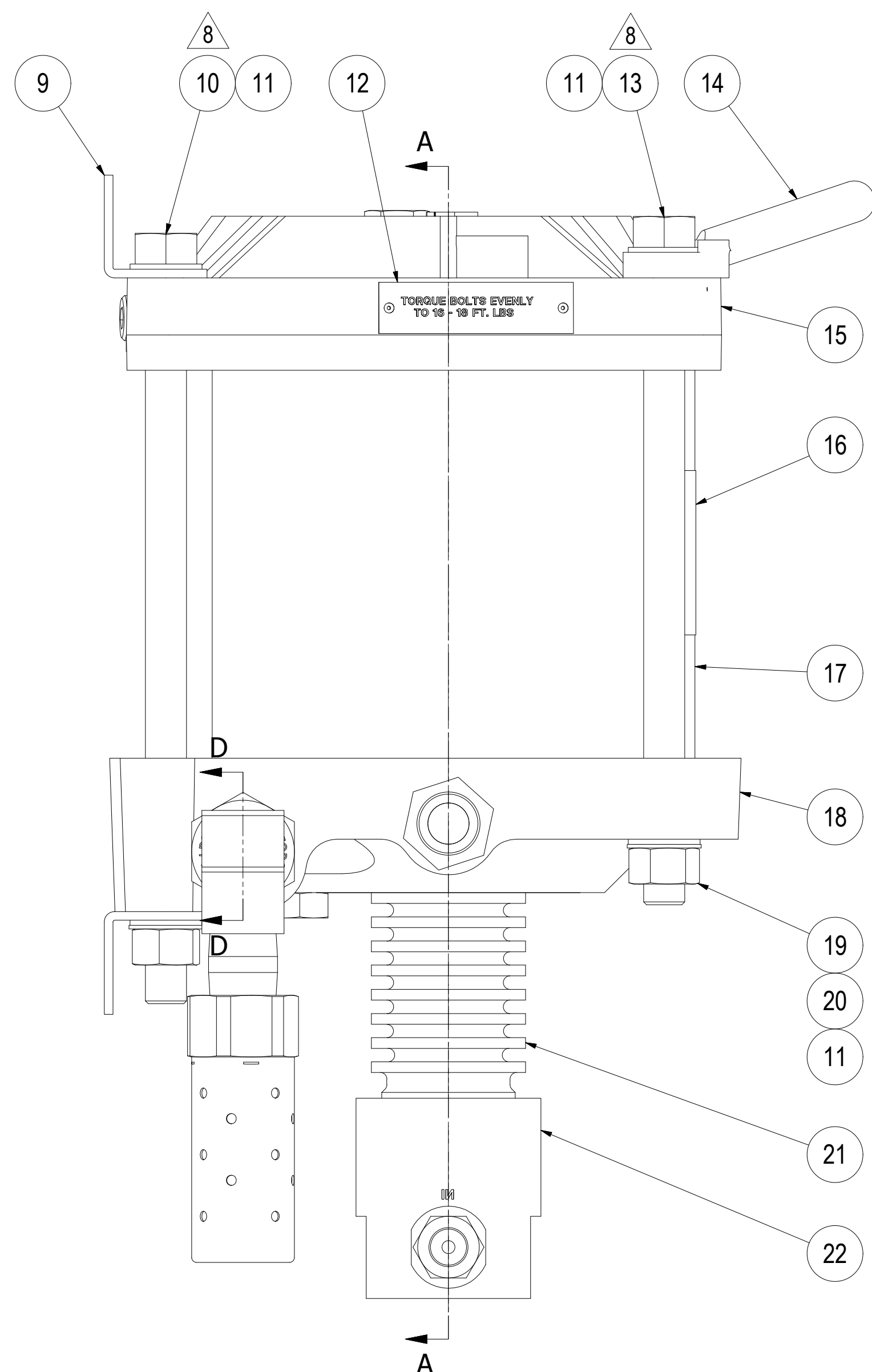
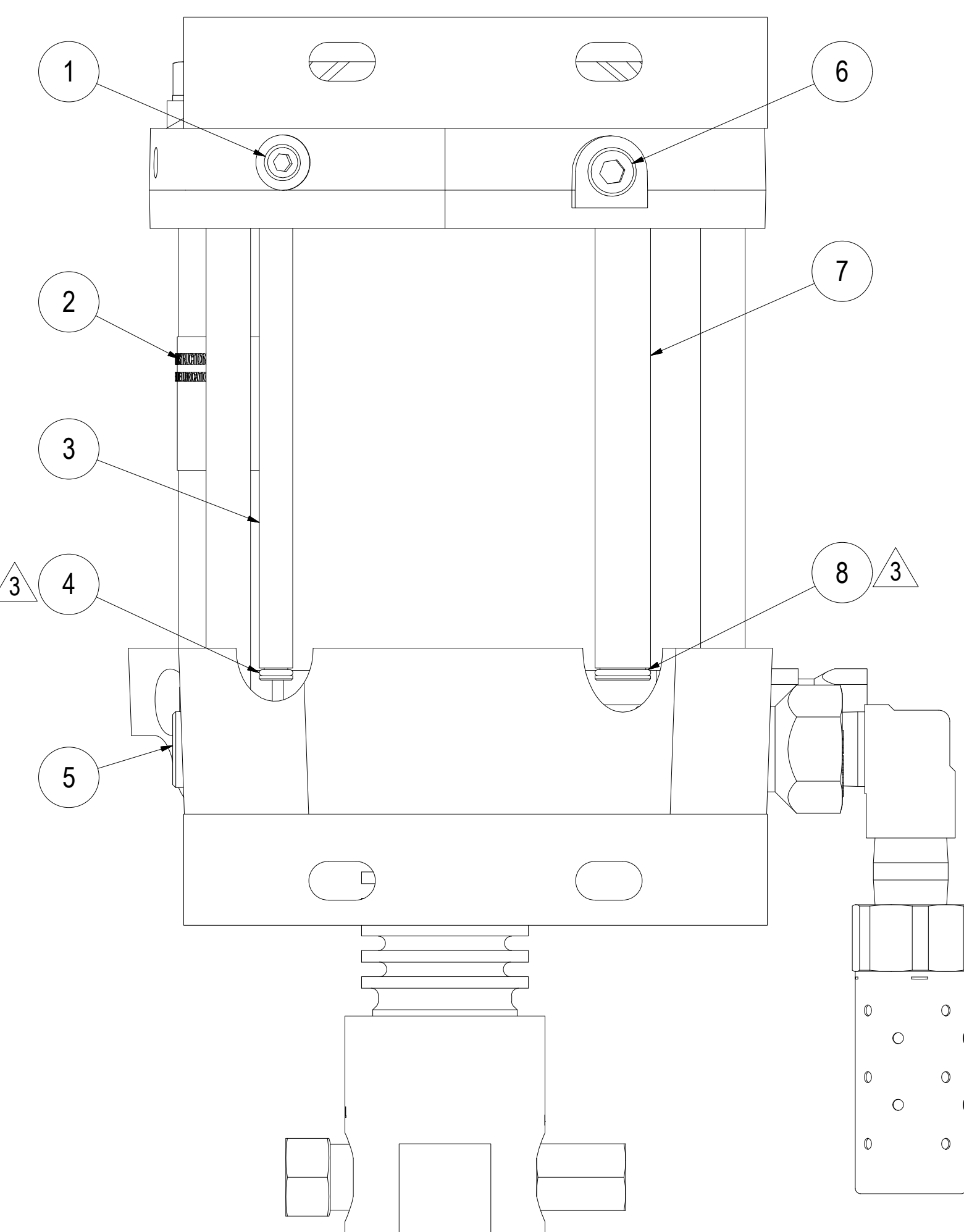
DETAIL F  
OUTLET



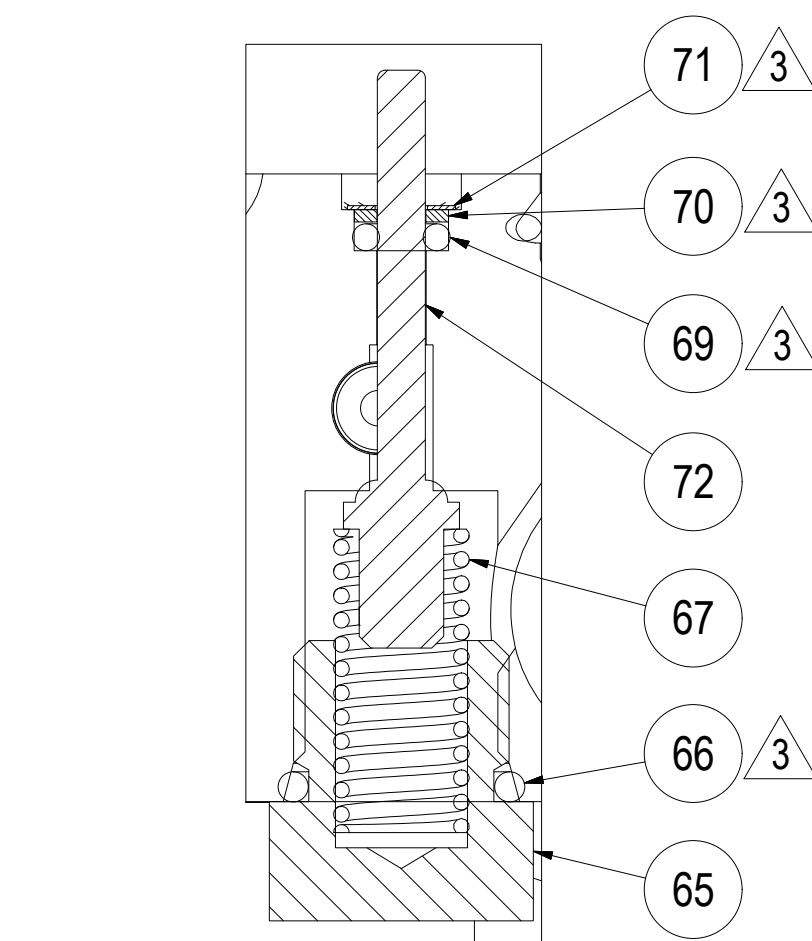
DETAIL G  
SCALE 2 : 1



SECTION B-B  
AIR DRIVE (UPPER)



SECTION A-A  
SCALE 3/4



SECTION C-C  
AIR DRIVE (LOWER)

INFORMATION CONTAINED HEREIN IS SUBJECT TO THE EXPORT ADMINISTRATION REGULATIONS (EAR) OF THE UNITED STATES OF AMERICA AND EXPORT CLASSIFIED UNDER THOSE REGULATIONS AS (ECCN: EAR99). NO PORTION OF THIS DOCUMENT CAN BE RE-EXPORTED FROM THE RECIPIENT COUNTRY OR RE-TRANSFERRED OR DISCLOSED TO ANY OTHER ENTITY OR PERSON NOT AUTHORIZED TO RECEIVE IT WITHOUT THE PRIOR AUTHORIZATION OF HASKEL INTERNATIONAL, LLC. THIS NOTICE SHALL BE ATTACHED TO ANY REPRODUCED SECTION OF THIS DOCUMENT.

Haskel International, LLC Burbank, California 91502	SIZE	CAGE CODE	DWG NO.	REV
	D	81400	17713	P
DRAWN	ROSULEK	SCALE: 3/4	INVENTOR DRAWING	SHEET 2 OF 2
CHECKED	ERA			