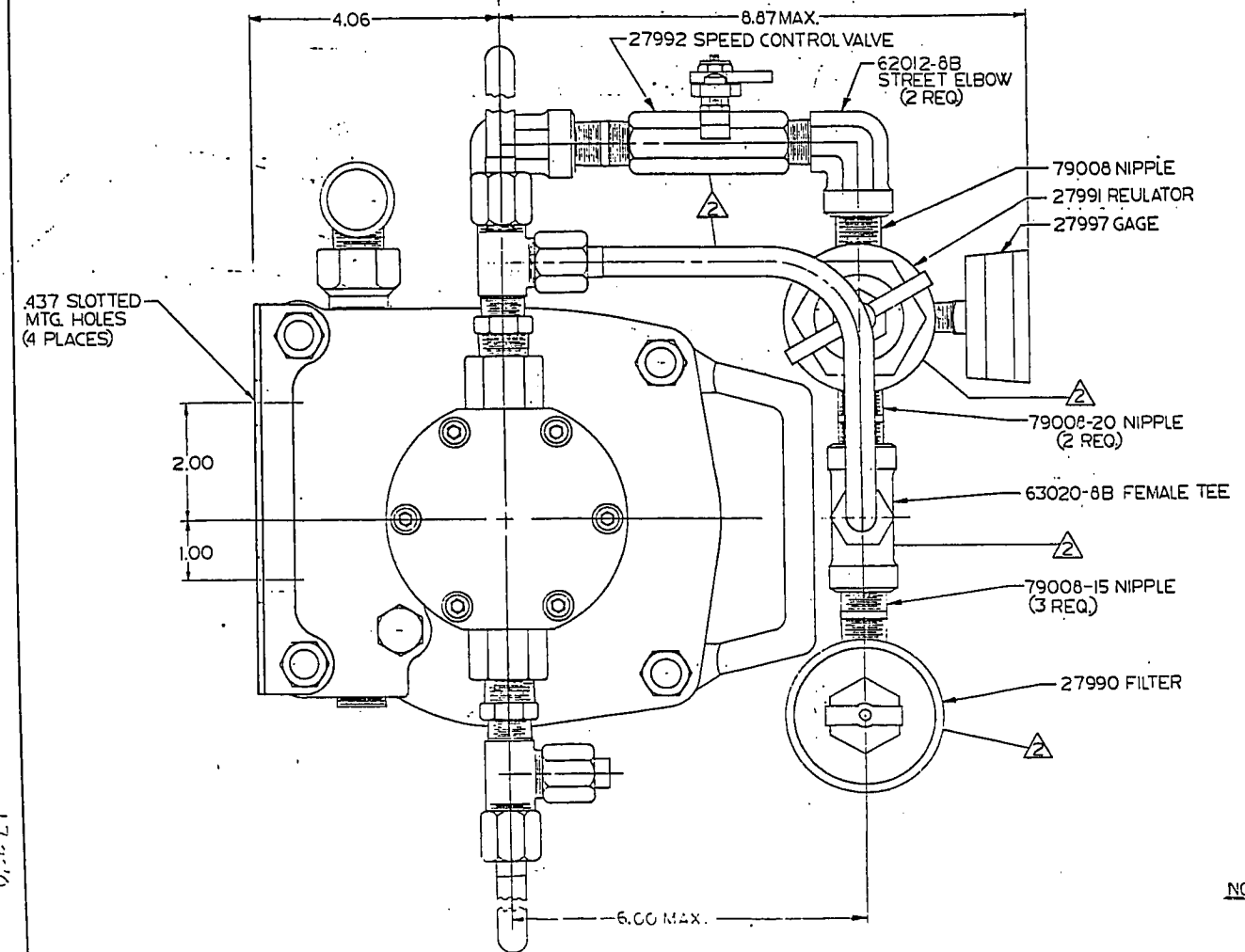
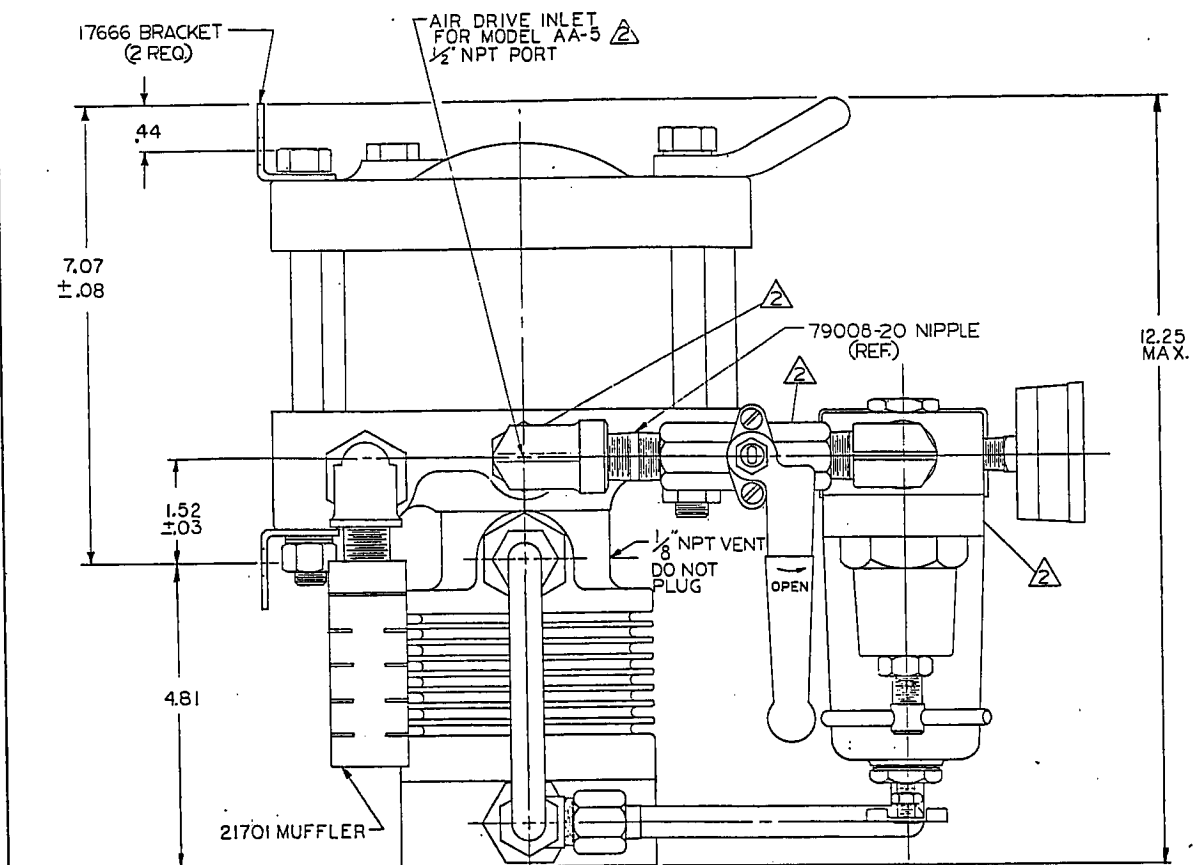
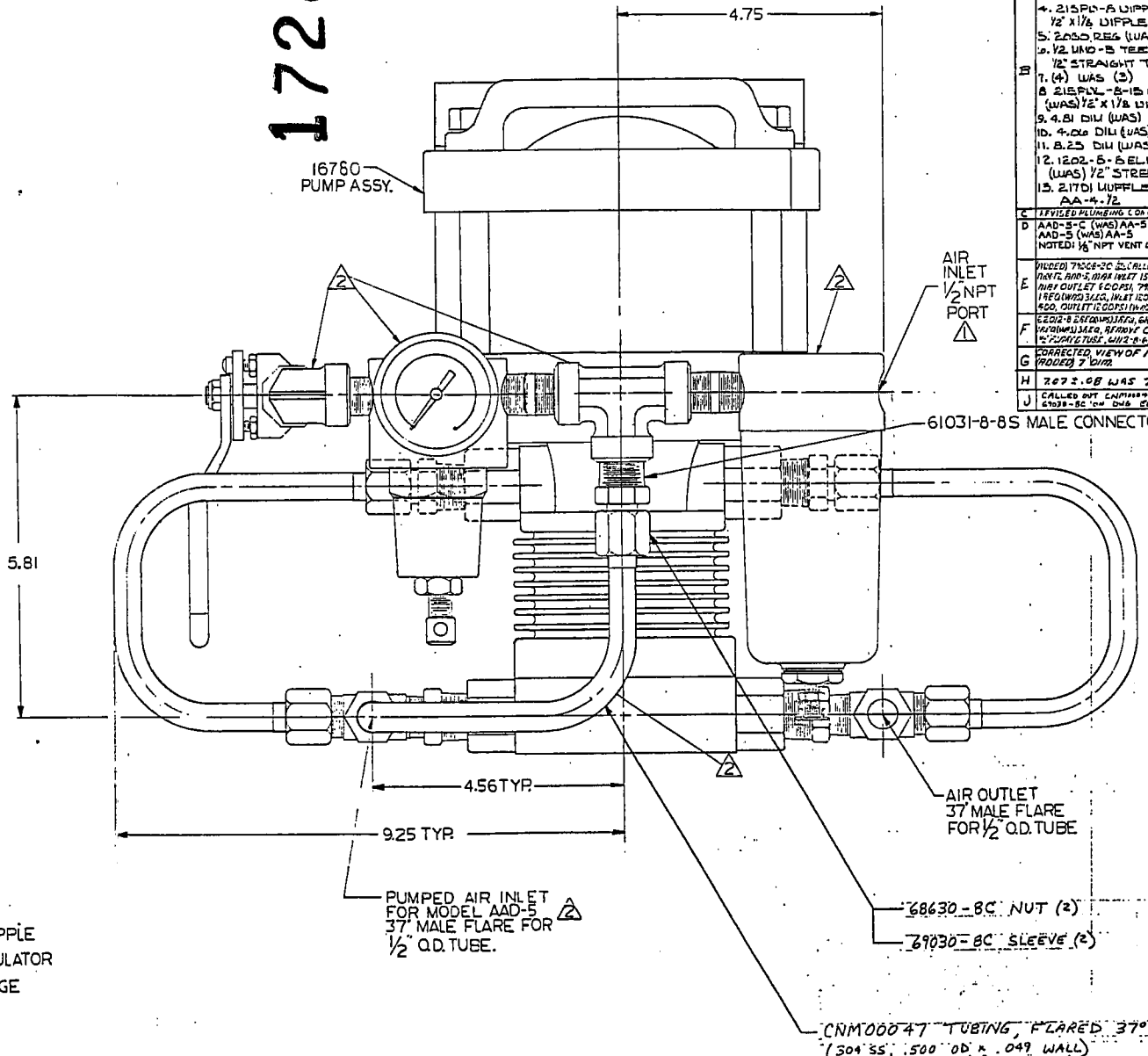


THIS DRAWING EMBODIES A CONFIDENTIAL PROPRIETARY DESIGN. ALL RIGHTS FOR REPRODUCTION, MANUFACTURING OR PATENTS ARE RESERVED BY THE HASKEL ENGINEERING & SUPPLY CO.



17280



REVISIONS				
REV.	DESCRIPTION	DATE	BY	CHK.
A	FLOW CURVE REMOVED			
B	1. 6.12 DIA WAS 6.00			
	2. 8.00 DIA WAS 7.62			
	3. REMOVED (2) FROM 1/2" X 1/8" NIPPLE			
	4. 2.15 PL-8 NIPPLE (WAS 1/2" X 1/8" NIPPLE)			
	5. 2.000 REG (WAS) 2.000			
	6. 1/2 UNF-8 TEE WAS 1/2" STRAIGHT TEE			
B	7. (4) WAS (3)			
	8. 2.15 PL-8-15 NIPPLE (WAS) 1/2" X 1/8" NIPPLE			
	9. 4.81 DIA (WAS) 4.75			
	10. 4.00 DIA (WAS) 4.15			
	11. 8.25 DIA (WAS) 7.50			
	12. 12.02-5-6 ELBOW (WAS) 1/2" STREET 'L'			
	13. 2.1701 MUFFLER (WAS) AA-4-72			
C	1. REVISED PUMPING CAPACITY			
D	AA-5-C (WAS) AA-5-C AND-5 (WAS) AA-5 NOTED: 1/8" NPT VENT DO NOT PLUG			
E	VIDEO TAPE-30 CALIBRATION TAPE, 1/2" NPT, 1/2" DIA INLET 150 PSI INLET OUTLET 150 PSI, 7000-15 1/2" UNF-8 TEE, 1/2" X 1/8" NIPPLE 450, OUTLET 1/2" DIA			
F	61031-8-8S MALE CONNECTOR 1/2" UNF-8 TEE, 1/2" X 1/8" NIPPLE 450, OUTLET 1/2" DIA			
G	CORRECTED VIEW OF 17666 E (WAS) 2 DIA			
H	2073-08 WAS 20			
J	CALLER BY COMMENTS, 2073-08 2073-08 2073-08 2073-08			

- PARTS ARE ONE REQ. UNLESS SHOWN IN PARENTHESES.
 - DIMENSIONS SHOWN ARE APPROXIMATE.
 - LUBRICATION OF DRIVING AIR IS UNDESIRABLE.
 - CAPACITY WILL BE REDUCED UNLESS AIR SUPPLY PIPING IS ADEQUATE TO MAINTAIN PRESSURE AT INLET PORT WITH AIR FLOWS UP TO 90 S.C.F.M.
 - DEADHEAD OUTLET PRESSURE AT ZERO FLOW IS PUMP INLET PRESSURE PLUS FOUR TIMES AIR DRIVE PRESSURE. FOR EXAMPLE WITH 100 PSI SUPPLY AND REGULATOR SET AT 50 PSI, OUTLET CAN REACH 100 + (4 X 50) = 300 PSI.
 - MAXIMUM RATED PRESSURES MODEL AAD-5
AIR DRIVE SECTION 150 PSI.
PUMP INLET 1200 PSI.
PUMP OUTLET 1200 PSI.
- ▲ MODEL AAD-5 IS WITHOUT AIR FILTER, REGULATOR, SHUT-OFF VALVE OR LINE BETWEEN AIR DRIVE AND PUMP INLET.
 ▲ MODEL AAD-5-C INCLUDES ALL COMPONENTS AS SHOWN.
 MAXIMUM INLET 150 PSI.
 MAXIMUM OUTLET 600 PSI.
- NOTES & PROCEDURES:-

CONTROL COPY
LOCATION # 1

REV./ASSEMB.	PART NO.	DESCRIPTION	DATE

LIST OF MATERIAL	
QTY	DESCRIPTION

INSTALLATION DRAWING
 AAD-5-C &
 AAD-5

HASKEL ENGINEERING & SUPPLY CO.
 BLENHAIM, CALIF.
 CODE IDENT. NO. 81400

17280