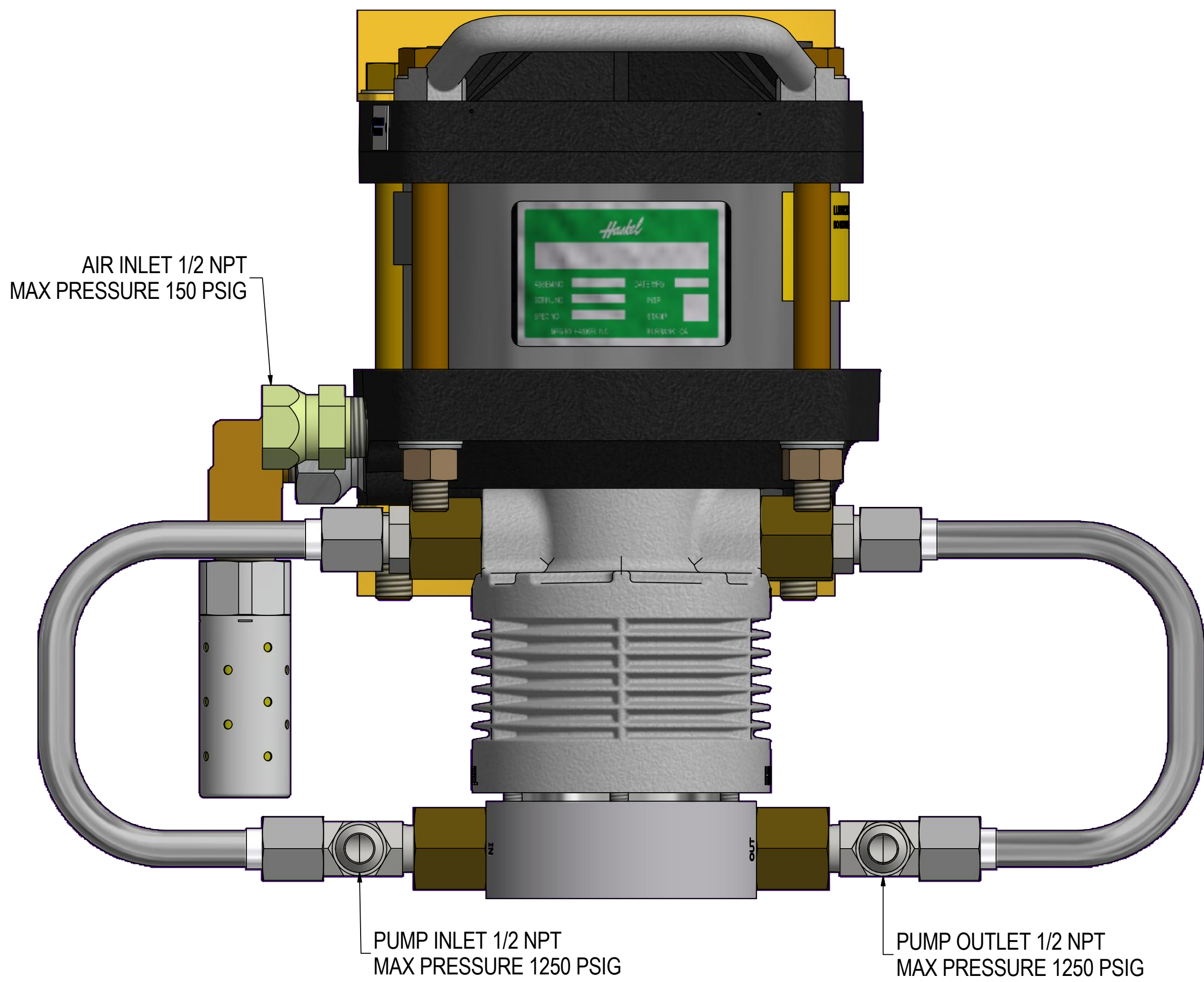


REVISION			
REV	DESCRIPTION	DATE	CHECKED
AN	REVISED PER ECO 32336	1/23/2017	BB

PARTS LIST					PARTS LIST				
ITEM	PART NUMBER	DESCRIPTION	MATERIAL	QTY	ITEM	PART NUMBER	DESCRIPTION	MATERIAL	QTY
1	28752	AIR CAP	AL DIE CAST ALLOY / QQ-A-591	1	53	17568-5	PIPE PLUG	STEEL	1
2	568050-2	O-RING	BUNA-N	2	54	61019-8S	FITTING, SWIVEL	STEEL	1
3	17339	BARREL, AIR	FIBERGLASS	1	55	16649	RETAINER	AL 2024-T351 OR T4	1
4	27272	O-RING	BUNA-N	1	56	62012-8B	STREET ELBOW	BRASS	1
5	17342	LABEL, STANDARD	AL 1145-H-19	1	57	79008	PIPE CLOSE NIPPLE	BRASS	1
6	16501-3	AIR CAP, LOWER	AL 356-T6	1	58	21701	MUFFLER-1/2 NPT	AL 6061	1
7	17562-3	HEX BOLT 1/2-13UNC X 6"	STEEL	2	59	568015-38	O-RING	CARBOXYLATED NITRITE-85	1
8	17995	HEX NUT 1/2-13UNC	COMMERCIAL STEEL	4	60	568020-2	O-RING	BUNA-N	5
9	CNF00028	WASHER, STEEL, FLAT, 1/2"	STEEL, CARBON	4	61	568017-38	O-RING	CARBOXYLATED NITRITE - 85	8
10	CNF00029	LOCK WASHER 1/2 SS	SS	8	62	16648	SLEEVE	AL 7075-T6	1
11	17562-5	HEX BOLT 1/2-13UNC X 7"	STEEL	2	63	17524	SPACER (NEOPRENE)	300 SERIES SS/NEOPRENE	1
12	17124	BUMPER, PISTON	17-7PH SS	1	64	16578	SPOOL	AL 7075-T651	1
13	568039-7	O-RING	VITON	1	65	29366	FITTING CHECK VALVE	300 SERIES SS	4
14	16778	PUMP BODY, AA-5 AO-4	ALUMINUM 356-T6	1	66	568910-7	O-RING	VITON	4
15	17517	SLEEVE, AA-5	6061-T6 AL	1	67	28119	SEAT, 1/2" BALL	PTFE, VIRGIN	4
16	568037-7	O-RING	VITON	1	68	29374	RING	316 SS	4
17	17525	END CAP -4 RATIO	2024-T4 AL	1	69	26130-16	BALL, PRECISION	316 SS	4
18	CNF00027	LOCKWASHER, 1/4	SS	6	70	28116	SPRING	316 SS	4
19	17587-2	SOCKET HEAD SCREW	ALLOY STEEL	6	71	28117	RETAINER	316 SS	4
20	16679	HANDLE	DIE CAST ALLOY	1	72	28123	SPRING	316 SS	4
21	51481	AIR PISTON ASSY.	--	1	73	29368	SPACER	303 SS	2
22	28607	NAMEPLATE, TORQUE	ALUM	1	74	29369	SEAT, OUTLET CHECK	300 SERIES S.S.	2
23	17666	MOUNTING BRACKET	12 GA STEEL	2	75	568016-7	O-RING	VITON	2
24	26817	DECAL, PATENT LABEL	PAPER	1	76	29820	TUBE ASSEMBLY, AAD-5	--	2
25	16510	PLUG	AL 2024-T351 OR T4	2	77	61031-8-6S	MALE CONNECTOR, 1/2TB X 3/8NPT	STEEL	2
26	16513	SPRING	ASTM-A-228	2	78	63231-8-6S	TEE, MALE RUN, 1/2 TB X 3/8 NPT	STEEL	2
27	568906-9	O-RING	BUNA-N	2					
28	27375-3V	STEM, PILOT VALVE	303 SS	1					
29	568006-2	O-RING	BUNA-N	2					
30	16517	SPACER	BRASS	2					
31	5005-31H	RETAINER RING	15-7 PH	2					
32	17385-5V	STEM, PILOT	303 SS	1					
33	568015-7	O-RING	VITON	1					
34	17983	PISTON ASSEMBLY -4 RATIO	--	1					
35	568330-7	O-RING	VITON	1					
36	17527	RING, PISTON	CARBON FILLED PTFE	1					
37	56716	SHIM	300 SERIES SS	2					
38	17984	SPACER ASSEMBLY, PISTON	--	1					
39	51473	NUT, PISTON ROD	15-5PH SS	1					
40	58590-5	SPIROL PIN	420 SS	1					
41	27908-2	BEARING	CARBON FILLED PTFE	2					
42	568116-7	O-RING	VITON	2					
43	26165-2	ROD SEAL	CARBON FILLED PTFE	2					
44	16615	EXTERNAL NUT	2024-T4 AL	1					
45	568035-2	O-RING	BUNA-N	1					
46	17568-3	PLUG	STEEL	1					
47	27078-2	FLOW TUBE	300 SERIES SS	1					
48	568014-2	O-RING	BUNA-N	1					
49	17568-2	PLUG, 1/8 NPT	STEEL	2					
50	568010-2	O-RING	BUNA-N	1					
51	27077-2	TUBE, PILOT	300 SERIES SS	1					
52	17830	LABEL-LUBRICATION	POLYESTER	1					



NOTES:

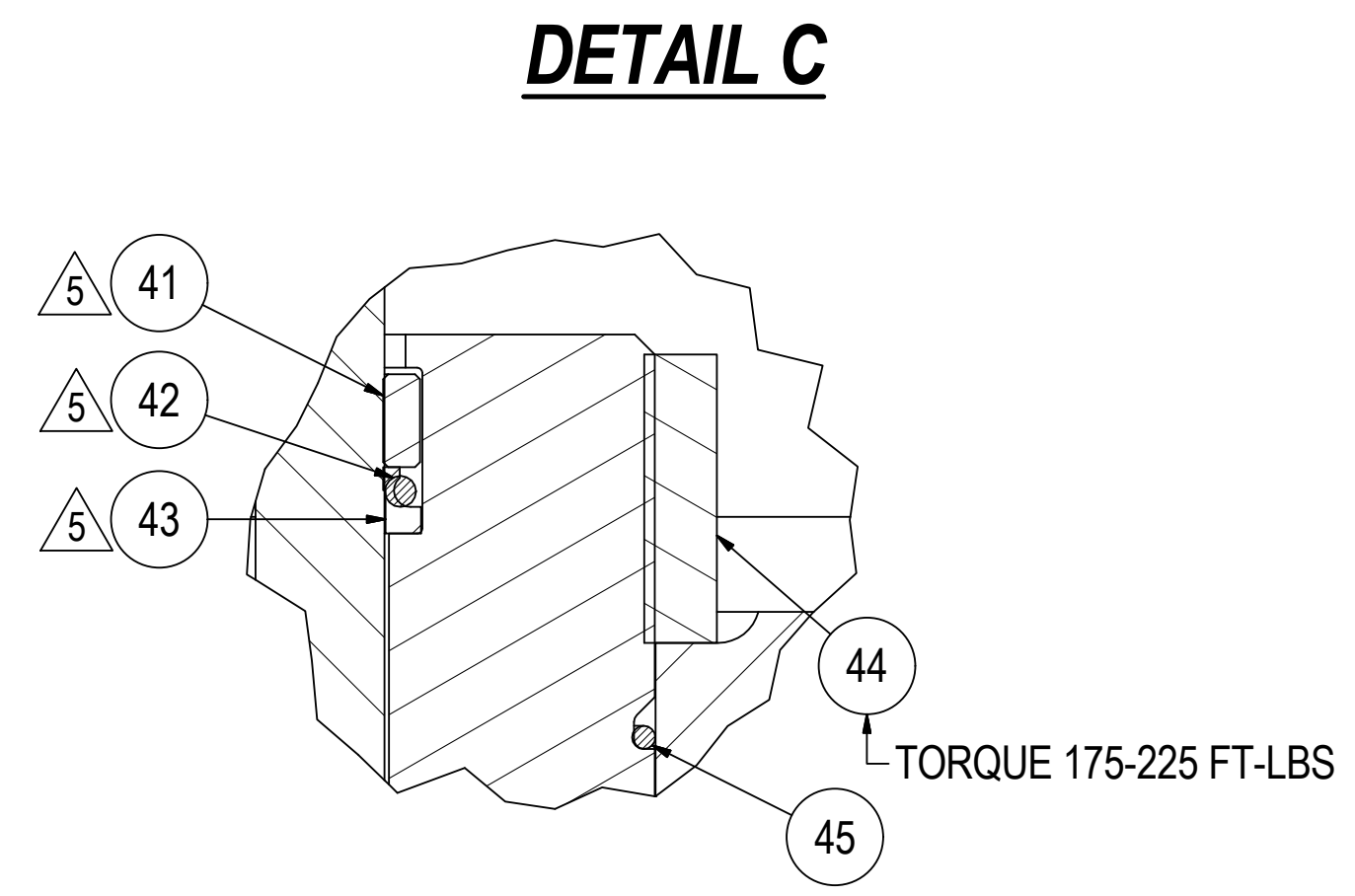
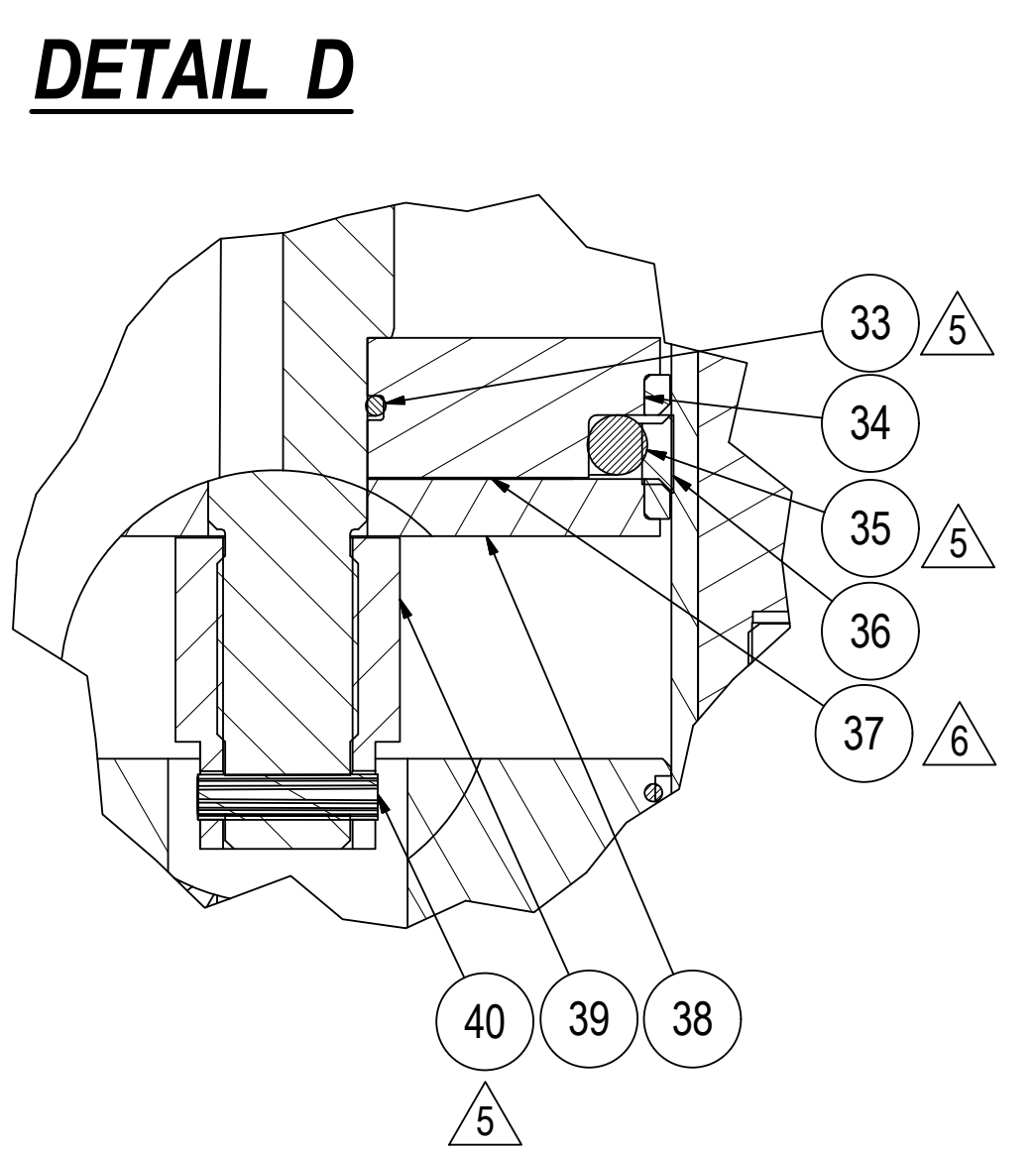
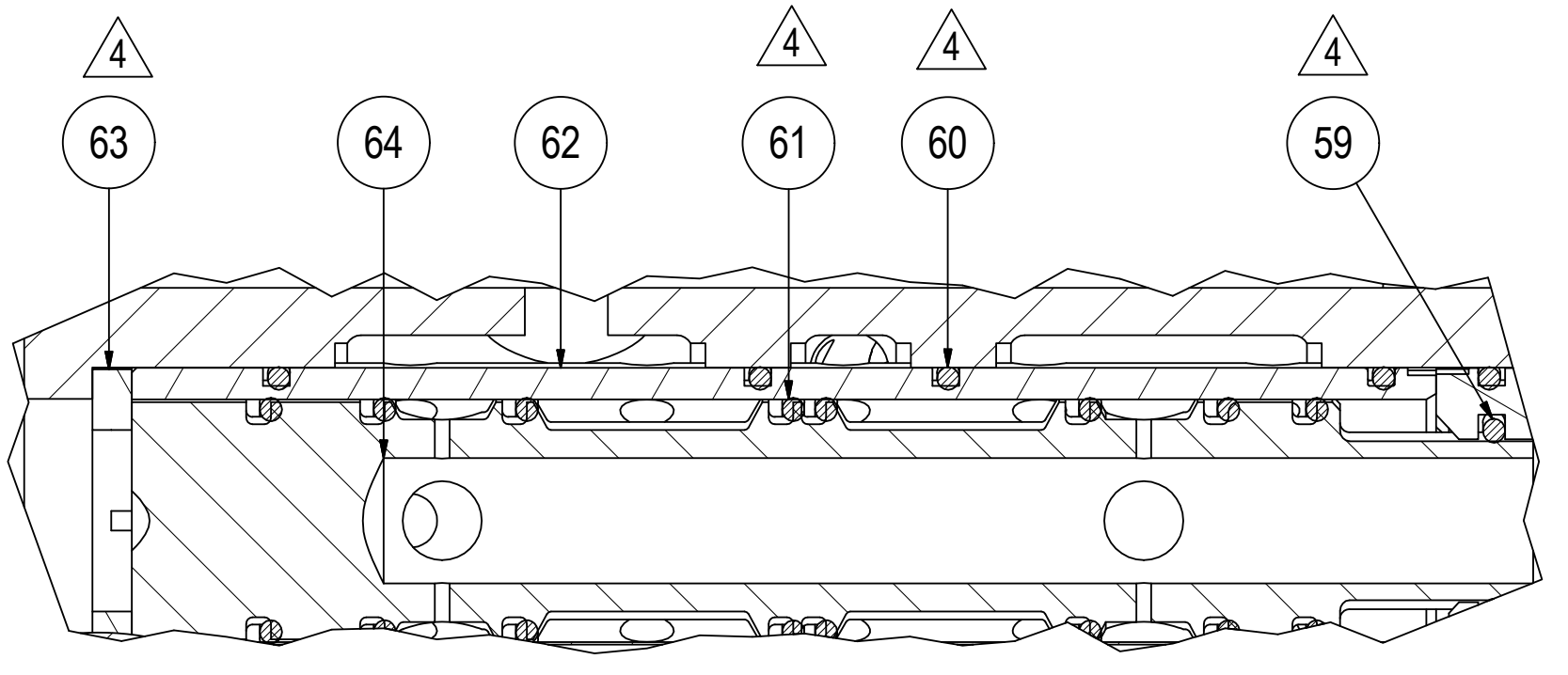
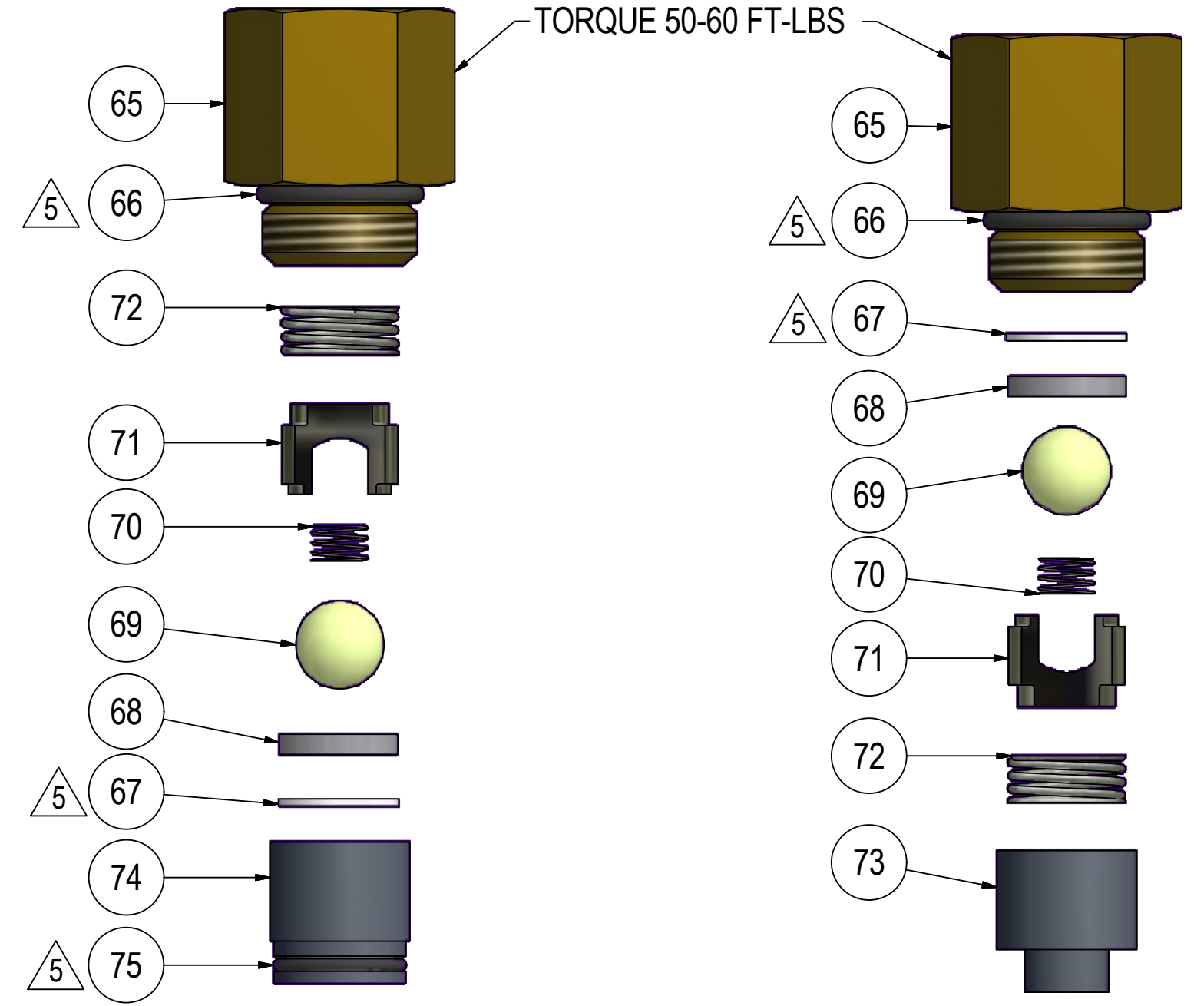
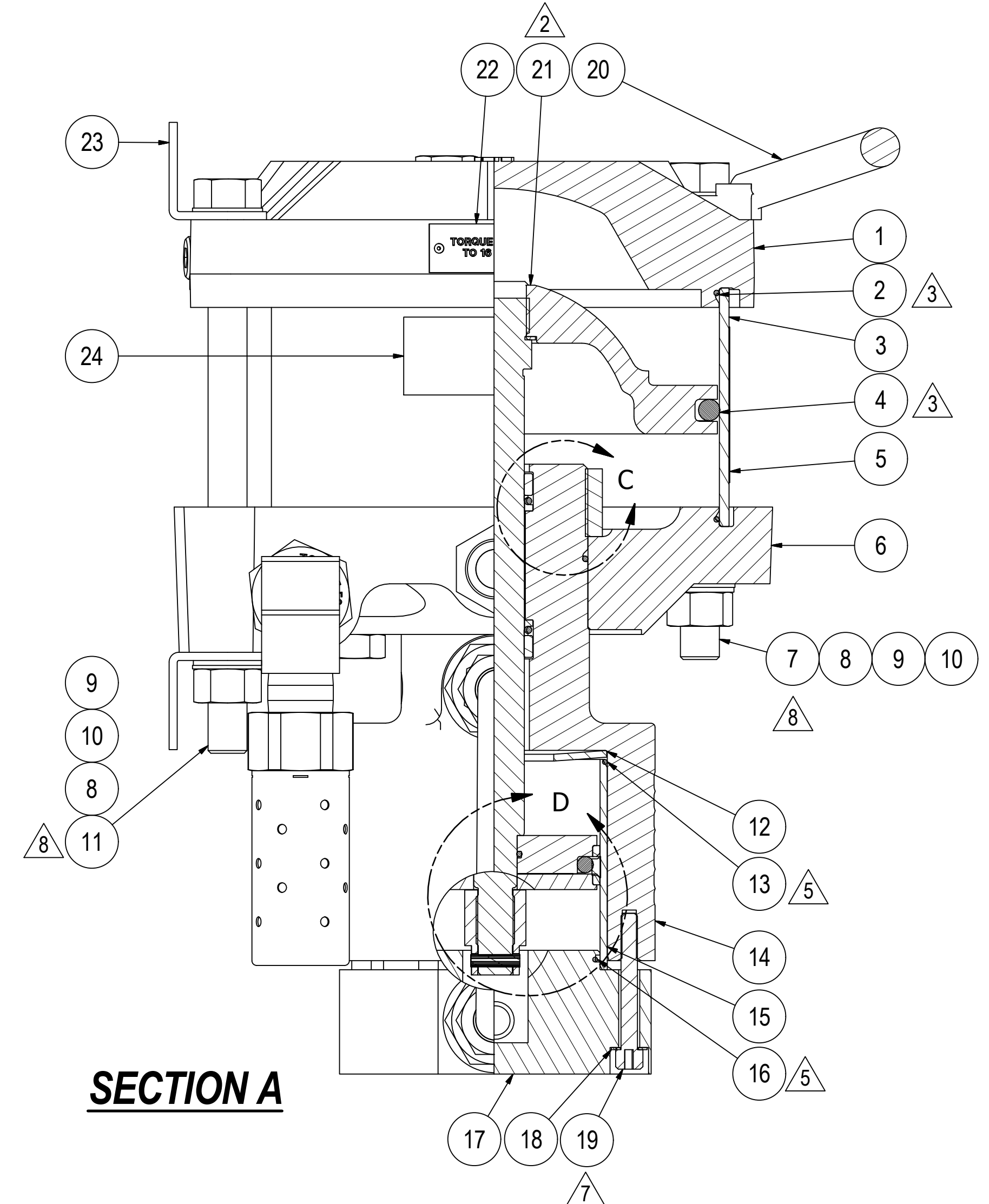
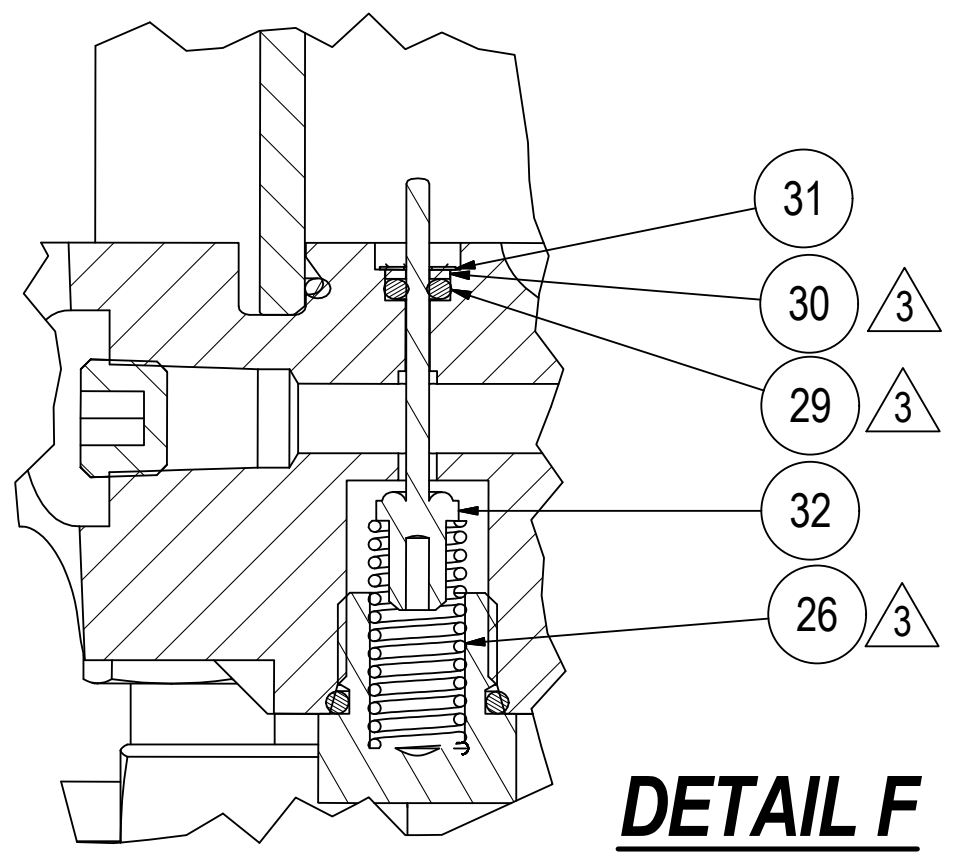
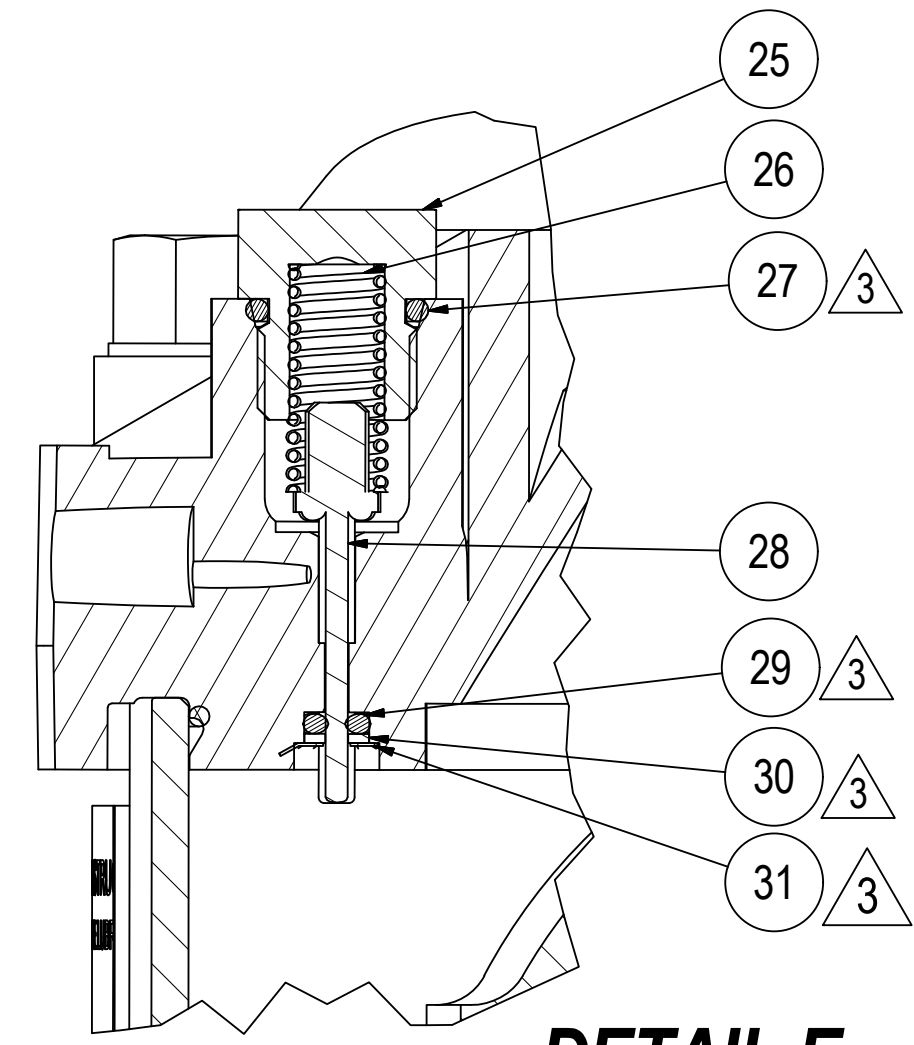
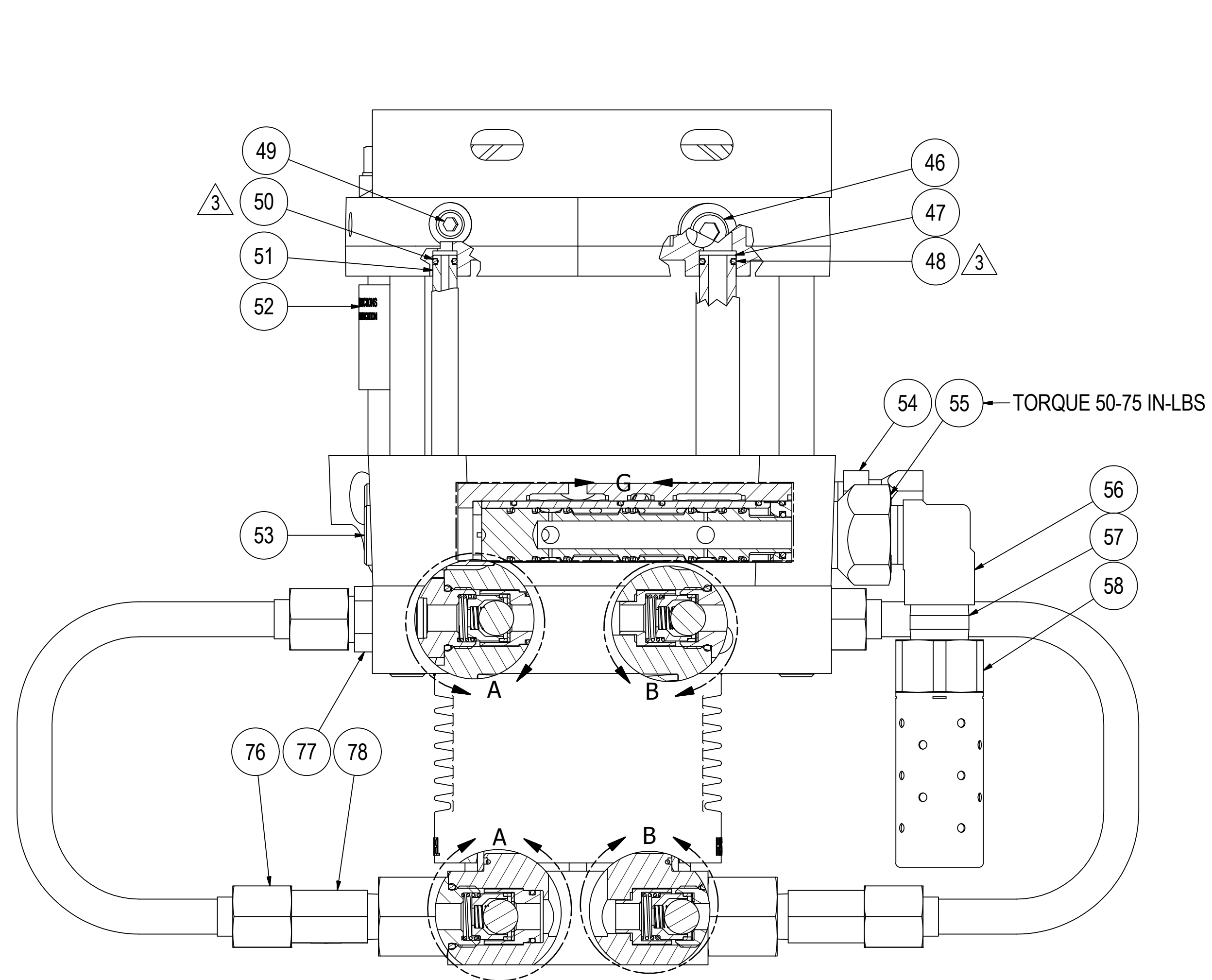
- 8 TORQUE TO 16-18 FT-LBS.
- 7 TORQUE TO 7 FT-LBS IN A DIAGONAL MANNER.
- 6 ADD 56716 SHIMS BETWEEN PISTON HALVES TO MINIMIZE GAP BETWEEN 17984 PISTON SPACER AND 51473 NUT WHEN 58590-5 SPIROL PIN INSTALLED (MAX 2 SHIMS.)
- 5 PARTS INCLUDED IN SEAL KIT 29013.
- 4 INCLUDED IN AIR CONTROL VALVE SEALS KIT, PART NO.16771 (INCLUDES A TUBE OF LUBRICANT.)
- 3 INCLUDED IN AIR DRIVE SEALS KIT, PART NO.16772 (INCLUDES TUBE OF LUBRICATION.)
- 2 AIR PISTON ASSEMBLY IS A NON-SEPARABLE ASSEMBLY AND COMPONENT PARTS THEREOF CANNOT BE PROCURED.
- 1 LUBRICATE CONTROL VALVE ASSEMBLY WITH HASKEL LUBRICANT PER HPS-3.14 LUBRICATE 568050-2 BARREL 'O' RING.

INFORMATION CONTAINED HEREIN IS SUBJECT TO THE EXPORT ADMINISTRATION REGULATIONS (EAR) OF THE UNITED STATES OF AMERICA AND EXPORT CLASSIFIED UNDER THOSE REGULATIONS AS (ECCN: EAR99). NO PORTION OF THIS DOCUMENT CAN BE RE-EXPORTED FROM THE RECIPIENT COUNTRY OR RE-TRANSFERRED OR DISCLOSED TO ANY OTHER ENTITY OR PERSON NOT AUTHORIZED TO RECEIVE IT WITHOUT THE PRIOR AUTHORIZATION OF HASKEL INTERNATIONAL, LLC. THIS NOTICE SHALL BE ATTACHED TO ANY REPRODUCED SECTION OF THIS DOCUMENT.

THIS DRAWING EMBODIES A CONFIDENTIAL PROPRIETARY DESIGN. ALL RIGHTS FOR REPRODUCTION, MANUFACTURING OR PATENTS ARE RESERVED BY HASKEL INTERNATIONAL, LLC.

NEXT ASSY (REF ONLY)		Haskel International, LLC Burbank, California 91502	
APPROVALS	DATE	TITLE	
DRAWN SDQ	8/16/1980	PUMP ASSEMBLY AAD-5	
CHECKED		SIZE D	CAGE CODE 81400
APPROVED RJL	9/16/1980	DWG NO.	17711
CAD FILENAME	AAD-5	SCALE: NONE	INVENTOR DRAWING
			SHEET 1 OF 2

REVISION			
REV	DESCRIPTION	DATE	CHECKED
	SEE SHEET 1		



INFORMATION CONTAINED HEREIN IS SUBJECT TO THE EXPORT ADMINISTRATION REGULATIONS (EAR) OF THE UNITED STATES OF AMERICA AND EXPORT CLASSIFIED UNDER THOSE REGULATIONS AS (ECCN: EAR99). NO PORTION OF THIS DOCUMENT CAN BE RE-EXPORTED FROM THE RECIPIENT COUNTRY OR RE-TRANSFERRED OR DISCLOSED TO ANY OTHER ENTITY OR PERSON NOT AUTHORIZED TO RECEIVE IT WITHOUT THE PRIOR AUTHORIZATION OF HASKEL INTERNATIONAL, LLC. THIS NOTICE SHALL BE ATTACHED TO ANY REPRODUCED SECTION OF THIS DOCUMENT.

	Haskel International, LLC Burbank, California 91502	SIZE D	CAGE CODE 81400	DWG NO. 17711	REV AN
	DRAWN SDQ	CHECKED	SCALE: NONE	INVENTOR DRAWING	SHEET 2 OF 2